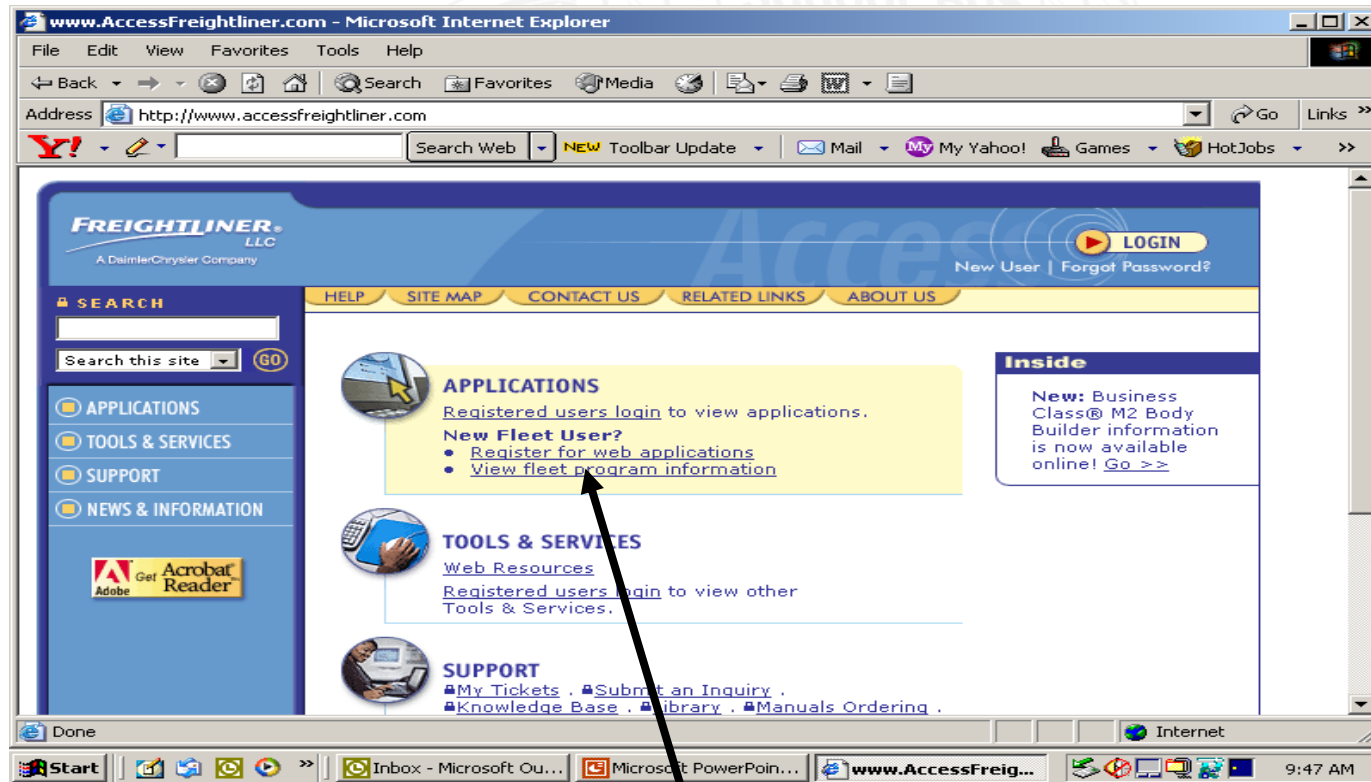


Electronics – Log-on

Saf-T-Liner C2

www.accessfreightliner.com



1. Click on “Register for web applications”

www.accessfreightliner.com

The screenshot shows a web browser window displaying the 'CUSTOMER ORDER FORM' page. The page has a blue sidebar with navigation links: APPLICATIONS, TOOLS & SERVICES, SUPPORT, and NEWS & INFORMATION. Below these are logos for paragon, TOTAL BUSINESS EXCELLENCE, MDI, and Adobe Acrobat Reader. The main content area contains the following text:

CUSTOMER ORDER FORM

Complete and send this form to obtain access to Freightliner LLC online information and applications. We will verify your information in our customer database, and if you are approved, in approximately three weeks you will receive User ID and password information via the email address you provide below. We will hold all information you provide in strict confidence according to our company's [privacy policy](#).

Note: If you encounter problems completing this application, please send an e-mail to FSWFleetSupport@freightliner.com for assistance.

* Required to complete form.

Company Information:

- * Type of business: -- Please Choose --
- * Company Name:
- Branch:
- * Street Address:
- * City:
- * State/Province: -- Click to Select --

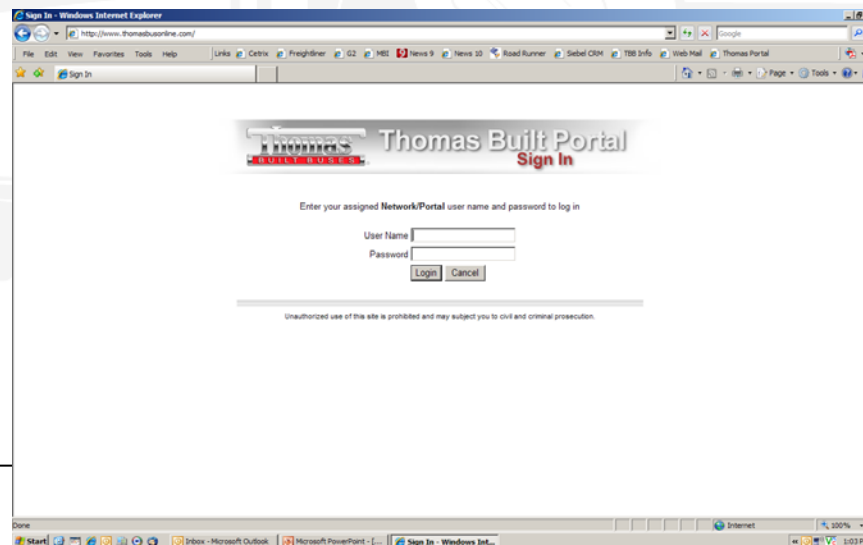
The browser's address bar shows the URL: <https://secure.freightliner.com/support/mdi/default.asp>. The taskbar at the bottom shows the Start button, several application icons, and the system clock displaying 9:56 AM.

2. Complete application form
3. You will need a C2 VIN #
3. Click "Submit"
4. Your logon will be emailed to you

www.thomasbusonline.com

The Application is available at www.matthewsbuses.com
“support tab”

- Please fax the completed application to Matthews Buses
- Matthews will complete and forward your application to Thomas Built Buses
- Thomas will email your password to you



www.accessfreightliner.com

Once you login, the authorized applications will appear on screen.

Not all applications may be released for your logon.

